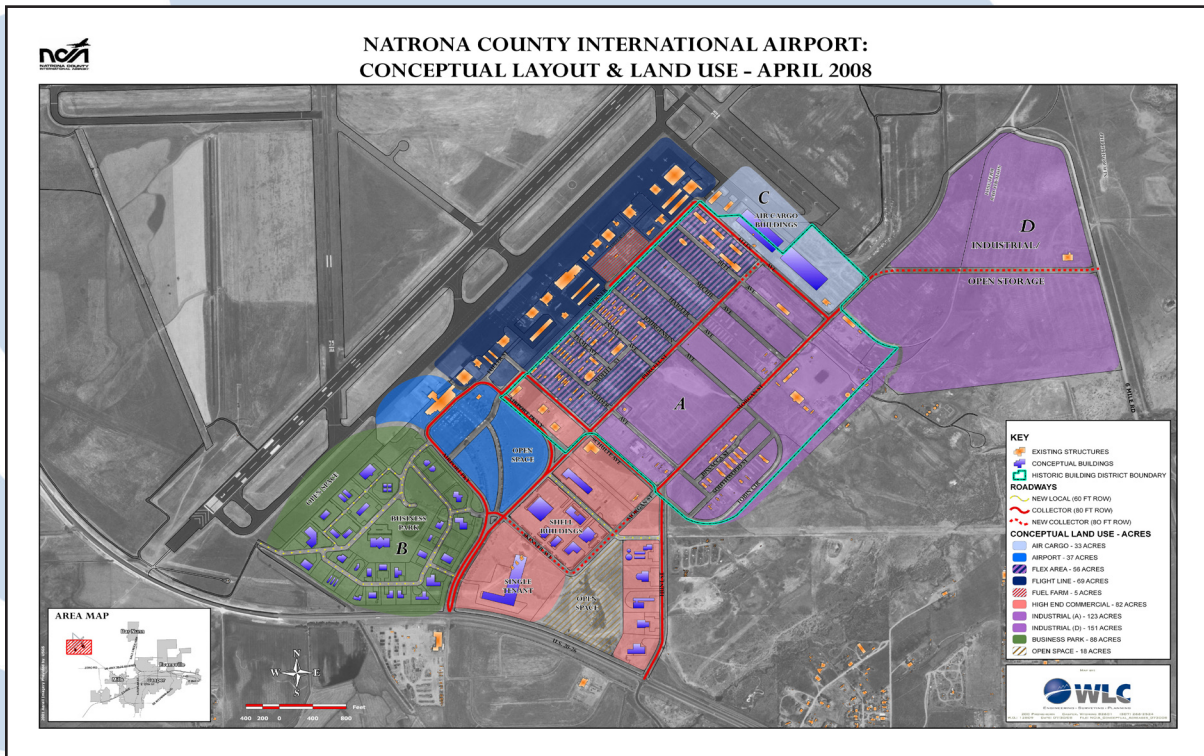


# Airport Business Park

Natrona County International Airport



Address:..... 8500 Airport Parkway, Casper WY (Natrona County)  
 Space type:..... Business Park - 5,150 acres  
 Commercial business park as developed:..... 88 acres with another 82 nearby  
 Other developed land:..... Parcel A is 123 acres; Parcel D is 151 acres  
 Utilities: .....Public water, sewer, telephone, natural gas, and electricity.

**Additional Information:**

The available land near the airport adds up to 5,150 acres, but the land is somewhat divided. It can easily be configured to accommodate various needs. The business park at the airport is 88 acres with another 82 acres of commercial land across the road. There is also agricultural ground between the approach of Runway 8 and Runway 3 that can be developed. Parcel D is 151 acres, parcel A is 123 Parcel A has some development. The county has applied to the state for grant funding to be used to lay fiber to the business park. Rocky Mountain Power could provide the necessary power with a new substation installation.

Property Contact:  
 Glenn Januska  
 Natrona County International Airport  
 8500 Airport Parkway  
 Casper, WY 82604

Phone: (307) 472-6688 ext. 12  
 Email: gjanuska@iflycasper.com

CAEDA makes no guarantee or representation about the accuracy or completeness of the information presented.

