

INDUSTRIAL & BUSINESS PARK

Salt Creek Heights



Address:..... Casper, WY (Natrona County)

Description:.....250 acre commercial and light industrial park

Utilities:..... Municipal water, Sewer, Gas, Electricity, Telephone and Conduit for fiber optic cable and cable television

Zoning:.....Light Industrial

Other:..... Paved roadways, curbs, gutters, lighting and graded, pad ready lots

Owner will consider build-to-suit and lease option projects. Lots can be replatted to suit the needs of the buyer.

Location:

The property is ideally located near I-25 and Hwy 20-26. It sits approximately 6 miles from the Casper/Natrona County International airport.

Property Contact:

Richie Bratton
Jona, Inc.

Email: rjbratton@mcmurry.net
Phone: 234-0583



Sources of property information are deemed reliable. CAEDA makes no guarantee or representation about the accuracy or completeness of the information presented.

Casper Area Economic Development Alliance

INDUSTRIAL & BUSINESS PARK

Salt Creek Heights



View looking north in May 2009 as lots were being graded.



View looking south in May 2009.

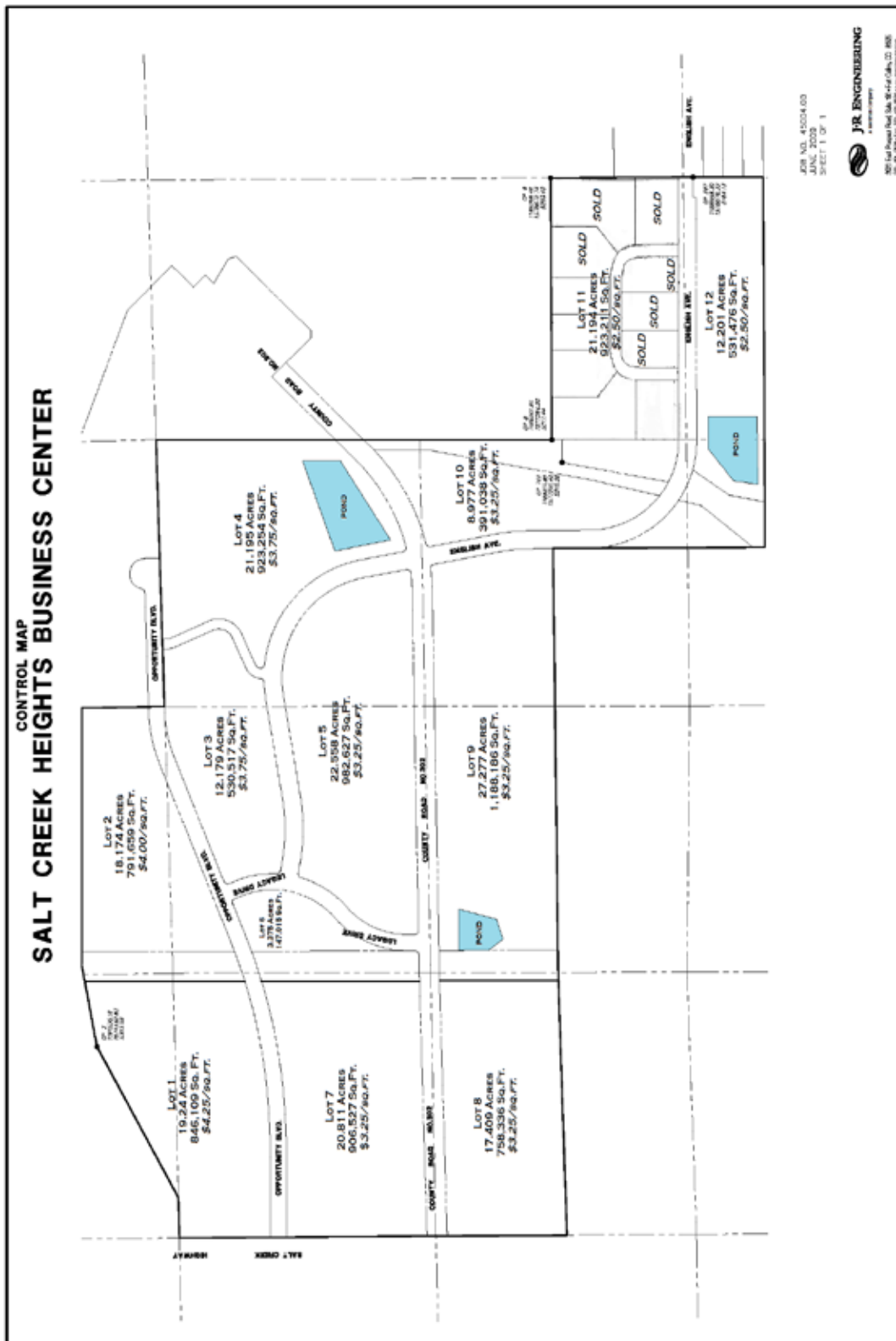


Sources of property information are deemed reliable. CAEDA makes no guarantee or representation about the accuracy or completeness of the information presented.

Casper Area Economic Development Alliance

INDUSTRIAL & BUSINESS PARK

Salt Creek Heights

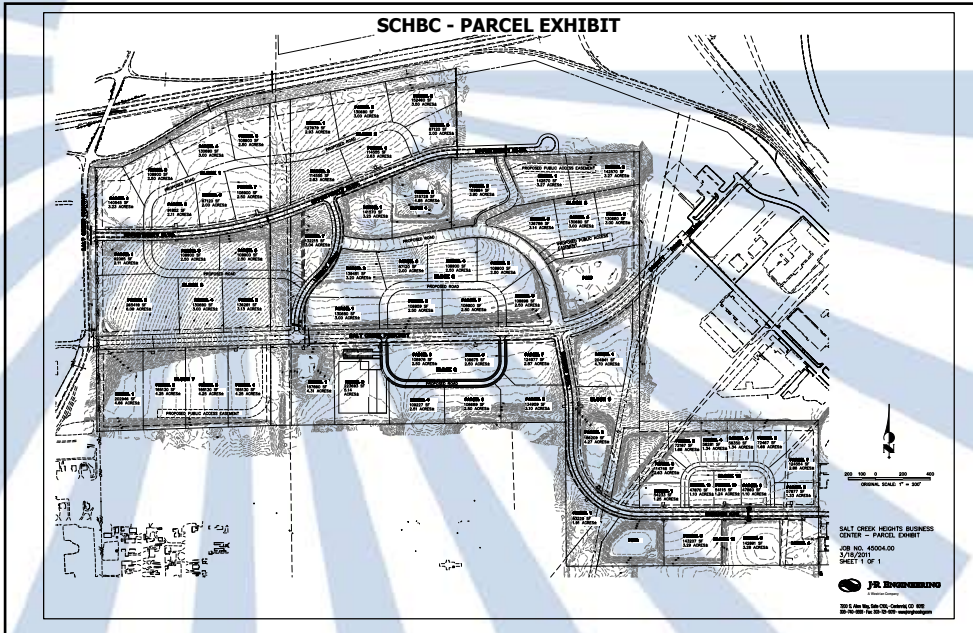


Conceptual plat. Lots can be replatted to accommodate the needs of the buyer.



Sources of property information are deemed reliable. CAEDA makes no guarantee or representation about the accuracy or completeness of the information presented.

Casper Area Economic Development Alliance



Sources of property information are deemed reliable. CAEDA makes no guarantee or representation about the accuracy or completeness of the information presented.

Casper Area Economic Development Alliance